



Claude Monet, *The Pavé de Chailly in the Forest Fontainebleau*, 1865.
Oil on canvas, 38¼ x 51¾ in. (97 x 130.5 cm). Ordrupgaard, Copenhagen

Photo: Pernille Klemp



Claude Monet, *An Oak at Bas-Breau (The Bodmer)*, 1865.
Oil on canvas, 21 $\frac{3}{8}$ x 16 $\frac{1}{8}$ in. (54.4 x 41 cm).

Private collection

Courtesy of Sotheby's



el. Massé 1588

Claude Monet, *The Green Wave*, ca. 1866–1867.
Oil on canvas, 19½ x 25½ in. (48.6 x 64.8 cm).
The Metropolitan Museum of Art, New York, H.O. Havemeyer Collection,
Bequest of Mrs. H.O. Havemeyer, 1929, 29.100.111



C. Monet

Claude Monet, *Le Phare de l'Hospice*, 1864.
Oil on canvas, 21¼ x 31⅞ in. (54 x 81 cm).

Kunsthaus Zürich

Bridgeman Images



Claude Monet, *The Pointe de la Hève at Low Tide*, 1865.

Oil on canvas, 35½ x 59¼ in. (90.2 x 150.5 cm).

Kimbell Art Museum, Fort Worth, AP 1968.07

Photograph by Robert LaPrelle / © Kimbell Art Museum

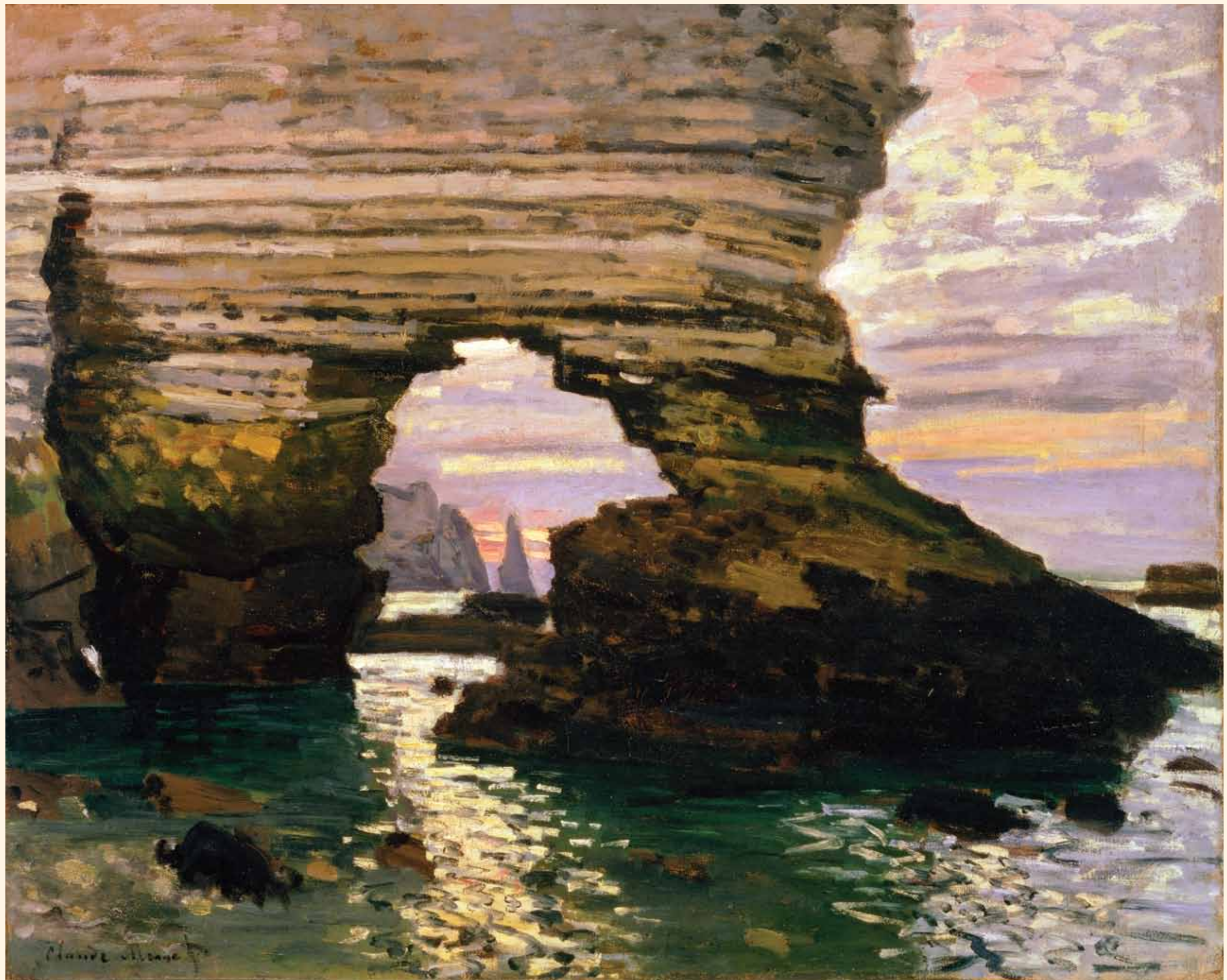


Claude Monet, *Luncheon on the Grass*, 1865–1866.
Oil on canvas, 97 $\frac{3}{8}$ x 85 $\frac{3}{8}$ in. (248 x 217 cm).
Musée d'Orsay, Paris, RF 1987 12

CAT: © RMN-Grand Palais / Art Resource, NY



Claude Monet, *Quai du Louvre*, 1867.
Oil on canvas, 25⁵/₈ x 36¹/₄ in. (65 x 92 cm).
Gemeentemuseum Den Haag
Cameraphoto Arte, Venice / Art Resource, NY



Claude Monet, *The Porte d'Amont, Étretat*, ca. 1868–1869.
Oil on canvas, 31 $\frac{1}{8}$ x 38 $\frac{3}{4}$ in. (79.1 x 98.4 cm).
Harvard Art Museums/Fogg Museum, Cambridge,
Gift of Mr. and Mrs. Joseph Pulitzer, Jr., 1957.163

Image courtesy Harvard Art Museums